

Level Ground/271A Mount Alexander Road Ascot Vale VIC

Set the mark with this funky city fringe office space/creative studio, complemented by a prominent position surrounded by Mount Alexander Road's village precinct, with the tram running right past the front door. Close to prominent retailer Dan Murphy and The Laurel Hotel.

Such great inner city convenience enhances this edgy space with polished concrete floors, contemporary lines and raw finishes. Flexible floor-plan appeals to professional offices/medical consulting/creative studio (STCA).

- Suitable for a variety of uses (STCA)
- Heating/cooling split system and alarm system
- Multiple data points to central hub
- An efficient kitchenette and full bathroom
- Rare opportunity to secure a versatile space in this inner

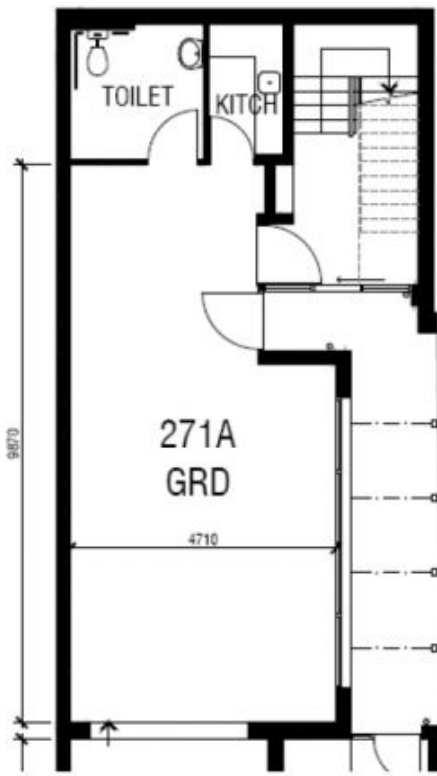
Price : \$20,000 + GST + Outgoings per annum
Building Size : 60 sqm
View : <https://www.alexkarbon.com.au/lease/vic/north/ascot-vale/commercial/retail/6208083>



Charles Bongiovanni
03 9326 8883



Gianni Fazzari
03 9326 8883



GROUND FLOOR 271 a Floor Plan

Scale in metres indicative only. Dimensions are approximate. All information contained herein is gathered from sources we believe to be reliable. However we cannot guarantee its accuracy and interested persons should rely on their own enquiries