






411/1050 Mt Alexander Road Essendon VIC

3  **2**  **2** 

This rare 3 bedroom residence has northern and eastern aspects, embracing an abundance of natural light. It is designed with effortless luxury in mind, with carefully crafted interiors where quality is paramount. A sculptural work of art created by Architect Clarke Hopkins Clarke, built by Buildcorp Commercial.

The apartment itself offers 3 great sized bedrooms. Luxury Rosegold tapware and Calcutta Marble throughout a fully equipped contemporary kitchen and both premium quality bathrooms. All this and 2 car spaces. Optimal space for entertaining with family and friends or just a place to relax in a large private space of approximately 122.3m2.

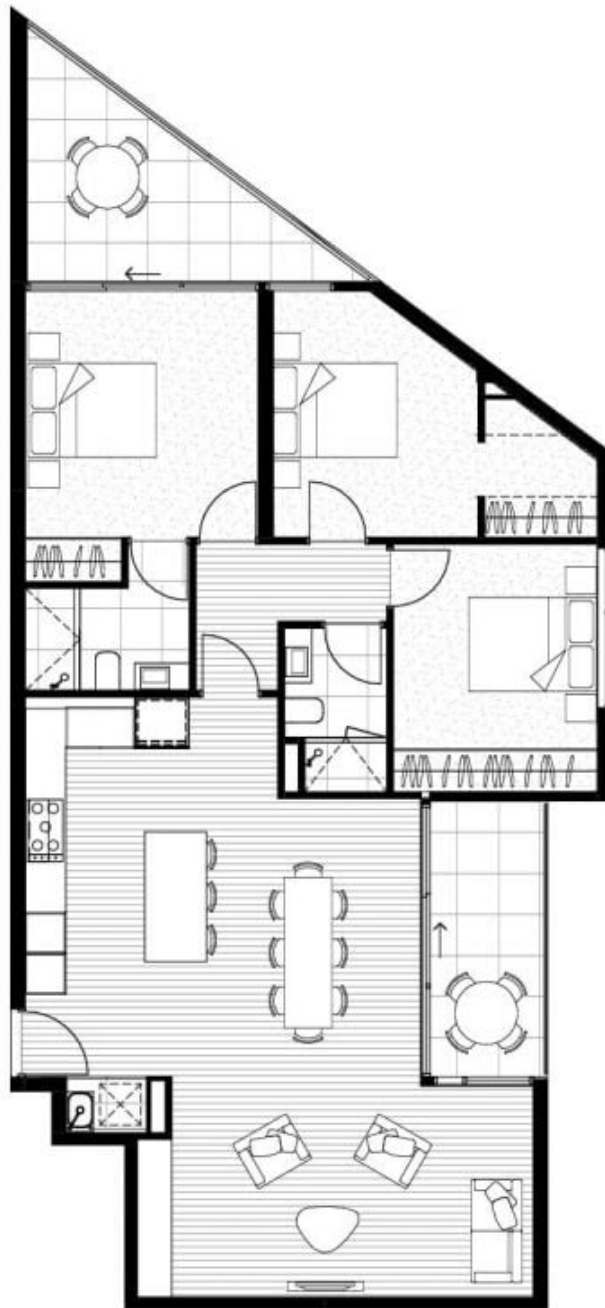
With all of Melbourne's first-class entertainment options just a stone's throw away, it's easy to see why Essendon is the premium suburb of the North and perfectly positioned in the world's most liveable city.

Price : \$ 940,000

View : <https://www.alexkarbon.com.au/sale/vic/north/essendon/residential/apartment/6208762>



Alex Puglia
03 9326 8883



ALEXA PARK RESIDENCES
 1050 Mt Alexander Road, Essendon VIC 3040
Residences 411+ 412 Combined

2 1 1

Area 106.2 m²
 Balcony Area 16.1 m²



FLOOR LAYOUT

NOTE: REFER FLOOR LAYOUT FOR LOCATION AND ORIENTATION OF INDIVIDUAL LOTS

All floor plans, images etc are illustrative only and do not form part of the Contract of Sale. Any dimensions, finishes or specifications depicted are subject to change without notice. The Developer and its related entities, consultants and agents do not warrant the accuracy of any information provided and do not accept any liability for negligence, misrepresentation or discrepancy in information or reliance thereon. Purchasers should make their own enquiries to satisfy themselves on information presented.