

## 18 Elizabeth Street Moonee Ponds VIC

2 1

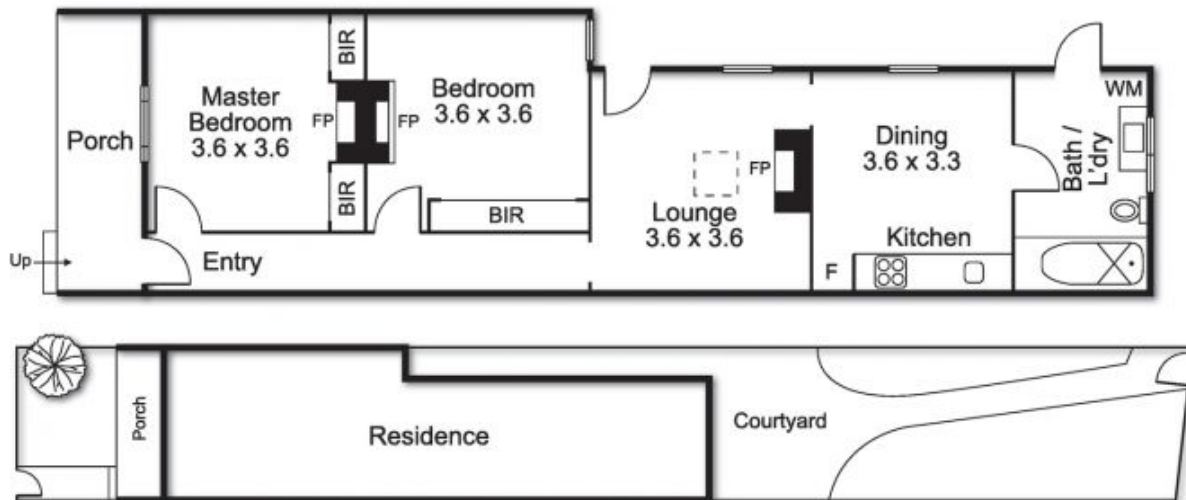
A charming, yet dynamic, Moonee Ponds lifestyle is on the cards with this engaging single-fronted two bedroom tuck-pointed Hawthorn brick façade Victorian nestled in between Mt Alexander and Ascot Vale Road's renowned restaurant, café and entertainment precinct. Resplendent in heritage charm, refreshed interiors feature leadlight aspect, decorative archway, polished Baltic pine floorboards and high ceilings with deep cornices. Relatively untouched, except for an add-on rear bathroom/laundry, the home's original floor plan remains intact and comprises welcoming hallway introducing central living room, highlighted by a gas log-heater, through to an updated kitchen/meals with stone counters, modern cabinetry, stainless steel gas cook top and an under bench electric oven. Positioned towards the front are two generous bedrooms, each have modern built-in-robos. The main bedroom is especially charming featuring an open

**Price** : \$ 950,000

**View** : <https://www.alexkarbon.com.au/sale/vic/north/moonee-ponds/residential/house/6208842>



**Alex Puglia**  
03 9326 8883



Every care has been taken to verify the accuracy of the net internal area. Prospective purchasers are advised to make their own enquiries to satisfy themselves in all respects.