



553 Heidelberg Road Alphington VIC

3 3 2

Boasting scale, situation and scenic views, this stunning three bedroom, three bathroom end of row townhouse offers all the key ingredients for a luxury, low maintenance lifestyle. The property enjoys a prominent position and is certain to impress urbanites with its close proximity to bustling cafés, boutiques and picturesque Yarra Bend Park where you'll discover the iconic Fairfield Park Boathouse, bike paths, walking trails and nature reserves. Spanning three impressive levels, the home features individual entrance and confident floor plan comprising generous open plan living domain, book ended by covered balconies, including one towards the front enjoying leafy vistas and city glimpses. A streamlined kitchen is packed with clever options such as a fridge cupboard, while stainless steel European appliances, thick stone waterfall island/benches and window splashback add a touch of class. Beautifully appointed bedrooms offer privacy and space, including

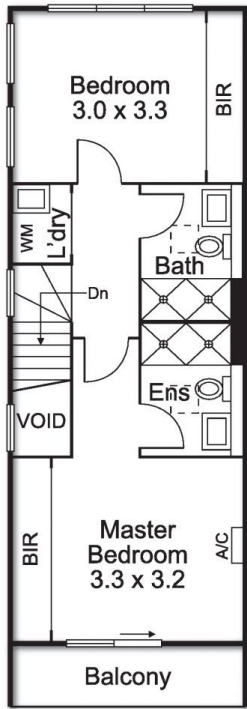
Price : \$ 820,000
View : <https://www.alexkarbon.com.au/sale/vic/north/alphington/residential/townhouse/6208858>



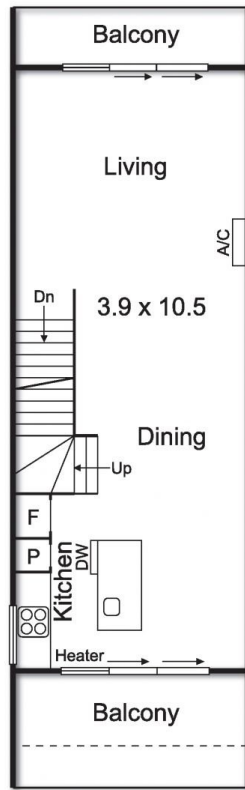
James Rapita
 9326 8883



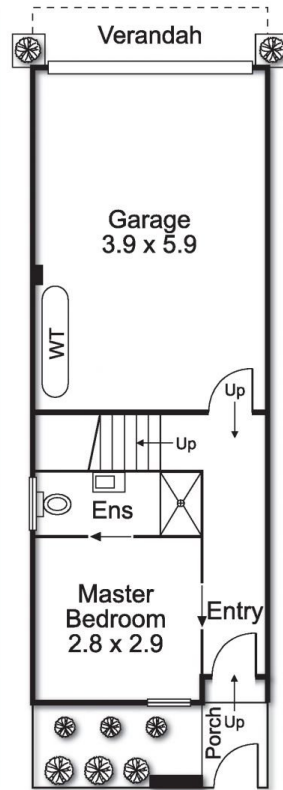
Charles Bongiovanni
 03 9326 8883



SECOND FLOOR



FIRST FLOOR



GROUND FLOOR

