

66/171 Flemington Road North Melbourne VIC

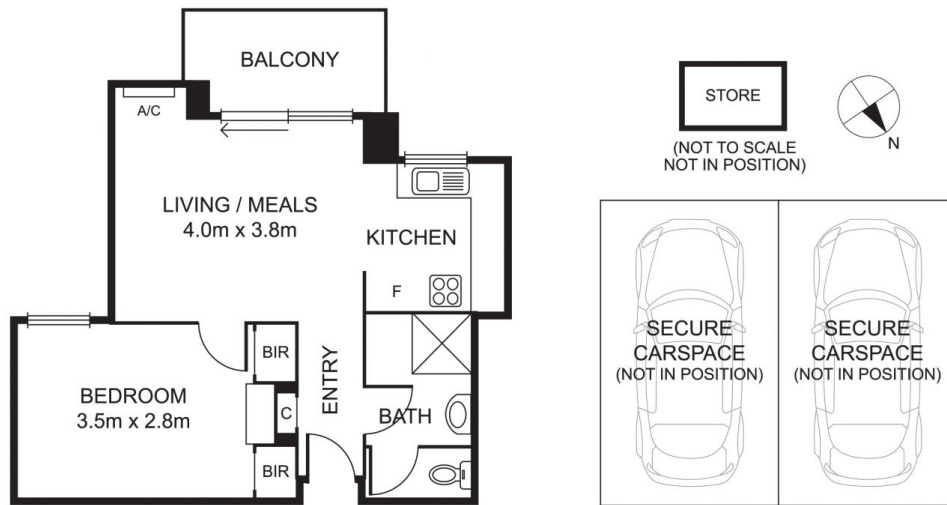
1 1 2

Experience awe inspiring panoramic city views from the comfort of this tastefully modernised one bedroom Royal Park Towers apartment. Superbly located opposite The Royal Children's Hospital, scenic Royal Park and just moments away from leading university and hospital precincts, it offers enormous appeal for astute investors and owner occupiers searching for a convenient inner city apartment or rewarding investment opportunity. Larger than most, the property comprises entry hall leading to a bright open plan living/meals space where glass sliders open onto a covered balcony enjoying breathtaking views stretching far and wide to the city skyline and mountain ranges. The kitchen has been totally refurbished with stone bench tops, modern cabinetry, tiled splashbacks and an electric, white Chef stove. Complementing the double bedroom are built-in drawers, desk and generous pair of built-in-robos. A pristine bathroom presents shower over

View : <https://www.alexkarbon.com.au/sale/vic/inner-city/north-melbourne/residential/apartment/6208863>



Alex Puglia
03 9326 8883



Disclaimer: Please note plans are indicative only and not drawn to exact scale. All dimensions are approximate. Potential buyers should satisfy themselves of any pertinent matters.