



301/20 Park Street Moonee Ponds VIC

2 **2** **1**

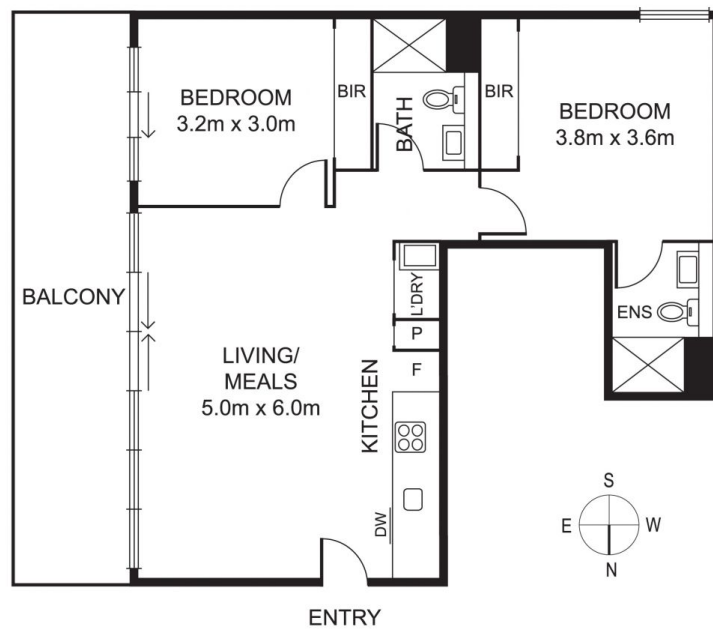
A magical Moonee Ponds lifestyle awaits the lucky new residents of this chic two bedroom, two bathroom upper level, rear apartment situated in the prized "Twenty Park" residential complex. With its enchanting views of the city skyline, Queens Park and St Monica's steeple providing plenty of wow factor, discerning buyers will also be delighted by a sophisticated open plan living domain, framed by floor-to-ceiling glass aspects, luring you onto a large sun soaked balcony where relaxing, dining and entertaining alfresco is certain to be an awe-inspiring experience. A bright and airy dining zone is accompanied by a streamlined kitchen featuring light reflective white cabinetry, stone benches and splashbacks, together with quality stainless steel Miele gas cook top, under bench electric oven and integrated drawer dishwasher, it has everything you need. Superbly orientated, ensuring privacy and optimising views, are two generous bedrooms,

Price : \$ 590,000

View : <https://www.alexkarbon.com.au/sale/vic/north/moonee-ponds/residential/apartment/6208870>



Charles Bongiovanni
03 9326 8883



Disclaimer: Please note plans are indicative only and not drawn to exact scale. All dimensions are approximate. Potential buyers should satisfy themselves of any pertinent matters.