

508/150 Dudley Street West Melbourne VIC

1  1  1 

Refined style and exceptional natural light add allure to this quality one bedroom plus study apartment in the sophisticated 'Ikebana' complex developed by Gurner on the city's edge. A wall to wall, floor to ceiling glass aspect illuminates the kitchen/meals/living where light stone surfaces, soft close drawers and a full selection of stainless steel Bosch appliances illustrate an elegant aesthetic found throughout the complex. Graced with a mirrored built-in robe the bedroom nestles between a balcony and the study, and the chic bathroom/laundry highlights a frameless rainfall shower. A secure entrance, elevator access, heating/cooling, off street parking and access to a karaoke room and rooftop garden with spas, a teppanyaki grill and relaxation areas further impress, and within a stroll you'll find Flagstaff Gardens, transport and the CBD. Very low Body Corporate Fees of Approx \$1,700 pa.

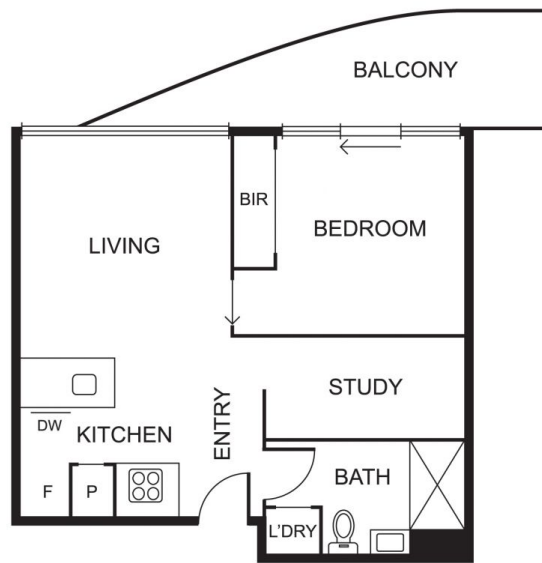
View : <https://www.alexkarbon.com.au/sale/vic/inner-city/west-melbourne/residential/apartment/6209101>



Gianni Fazzari
03 9326 8883



Alex Puglia
03 9326 8883



Disclaimer: Please note plans are indicative only and not drawn to exact scale. All dimensions are approximate. Potential buyers should satisfy themselves of any pertinent matters.