



484 Abbotsford Street North Melbourne VIC

3 2

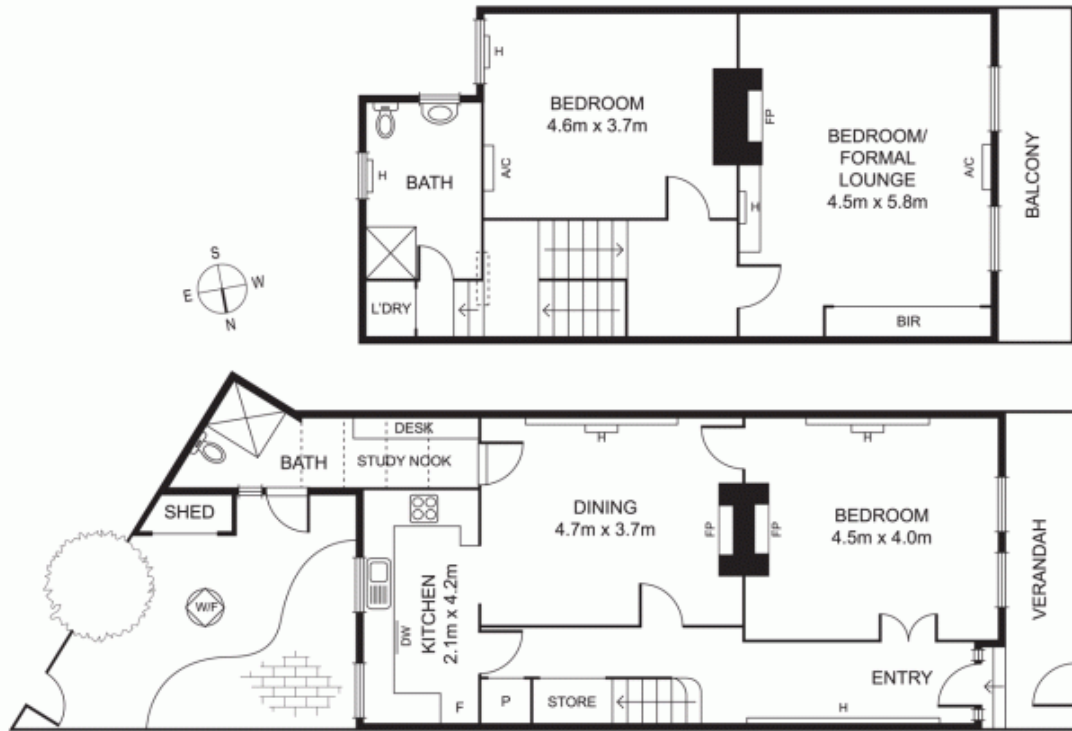
Grand, evocative and one of the landmark, circa 1891, "Glendalough Terrace" residences, this glorious three bedroom, two bathroom balconied Victorian terrace is superbly located in the prestigious Hotham Hill precinct. Introduced by a stunning tessellated tiled entry, a corbelled arch hallway leads to interconnecting formal lounge/third bedroom and an appealing living/dining zone featuring towering ceilings, chandeliers and ornately tiled open fireplaces with timber surrounds and cast-iron inserts. Opening from a light filled corridor, with study nook, a charming courtyard garden is the perfect place to relax and dine alfresco, while an ornamental pear tree acts as a natural canopy providing shade, ambience and privacy. A well-appointed gourmet kitchen displays gas cooktop, under bench oven, dishwasher and generous under-stair pantry, meanwhile large glass aspects draw in natural light and frame pretty garden vistas. A delightful main bedroom

Price : \$ 1,695,000
View : <https://www.alexkarbon.com.au/sale/vic/inner-city/north-melbourne/residential/house/6209154>



Charles Bongiovanni
 03 9326 8883

UPPER LEVEL



Disclaimer: Please note plans are indicative only and not drawn to exact scale. All dimensions are approximate. Potential buyers should satisfy themselves of any pertinent matters.