

16 Richmond Terrace Richmond VIC

4 1 2

In a dynamic and exclusive inner city location, walking distance from the iconic Melbourne Cricket Ground, Yarra River precinct and vibrant café scenes, is a grandly proportioned four bedroom double-fronted residence offering enormous renovation, rebuild or redevelopment potential (STCA). Boasting land, approximately 388sqm, direct side driveway access and coveted off street parking, it's certain to inspire architects and designers alike. Exhibiting qualities of a by-gone era, an extended layout comprises four principal rooms (currently bedrooms) and corbelled arch hallway with towering ceilings and decorative rosettes. Towards the rear finds living/dining room, original bathroom, laundry, storerooms and functional kitchen/meals opening to covered outdoor areas.

Within minutes from the CBD, Royal Botanic Gardens, entertainment venues, restaurants, shops and transport, it offers exciting lifestyle choices and a dream location for

Price : \$ 2,200,000

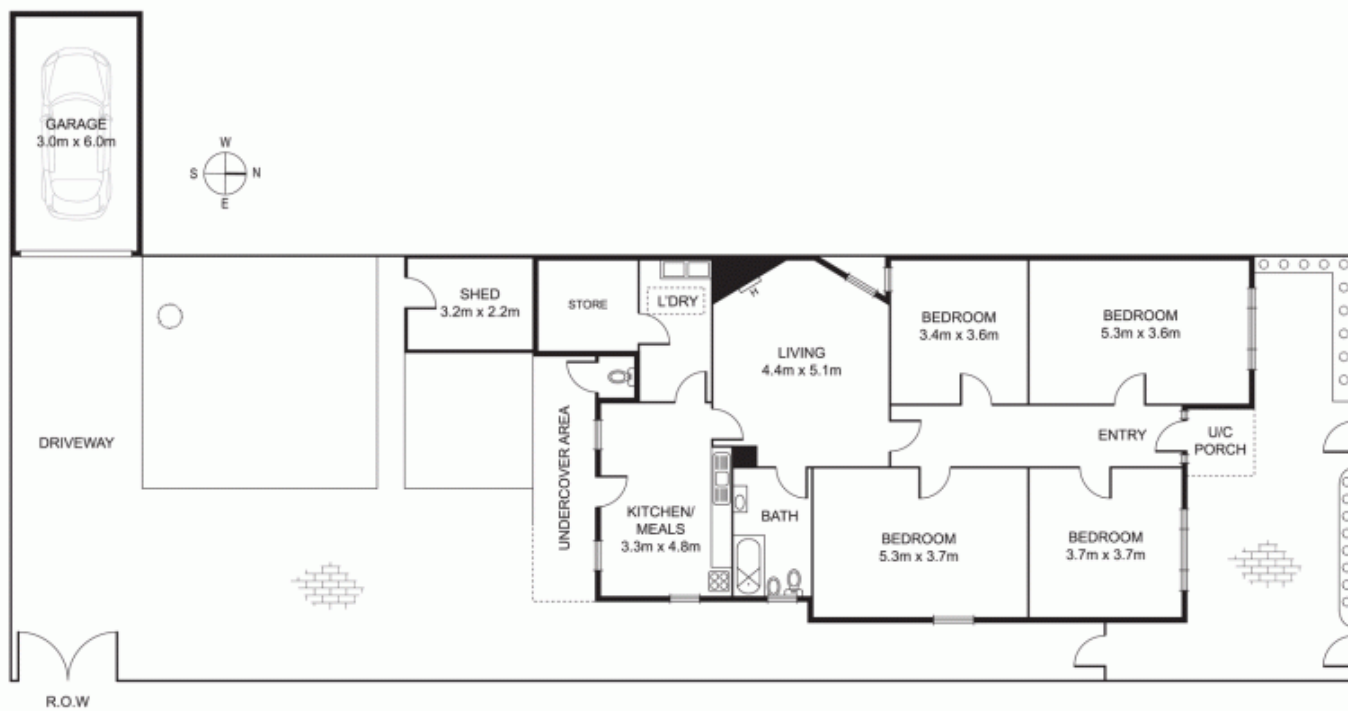
View : <https://www.alexkarbon.com.au/sale/vic/inner-city/richmond/residential/house/6209164>



James Rapita
9326 8883



Alex Puglia
03 9326 8883



Disclaimer: Please note plans are indicative only and not drawn to exact scale. All dimensions are approximate. Potential buyers should satisfy themselves of any pertinent matters.