



**1/80 Chapman Street North Melbourne VIC**

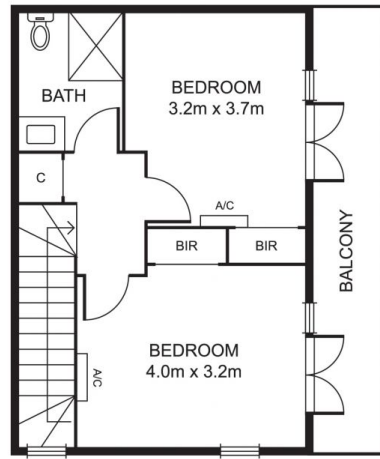
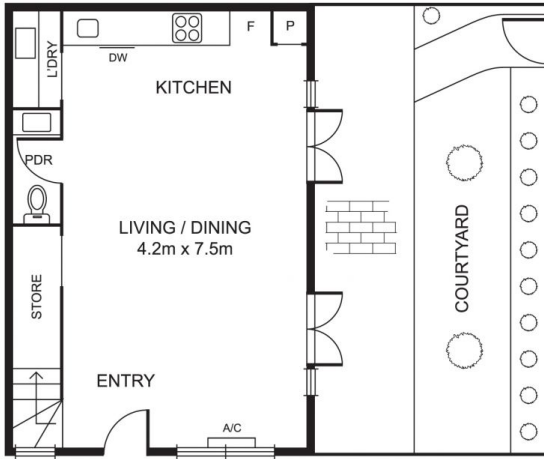
2 1 1

How fortunate we are to be blessed with this brand-new development in this neighborhood. Every detail has been added to the finish of these properties and we invite you in to come to lease one of 7 townhouses. Townhouse 1 being the front unit and more generous in size of the 2 bedrooms provides both bedrooms upstairs that share a large balcony and main bathroom. Open plan/modern living upon entry with storage under stairs and plenty of cupboard space in the kitchen with stainless fridge, Bosch stainless gas cooktop and double doors that open to your own private courtyard allowing the outside in. Features include split system in each bedroom and living area, Bosch washer/dryer combo and fridge. Location is minutes' walk from the tram stop which provides close access and proximity to the CBD, Royal Children's Hospital, University High School Zone, Carlton and trendy Errol St precinct, along with Melbourne Uni. Don't let me be the one to tell

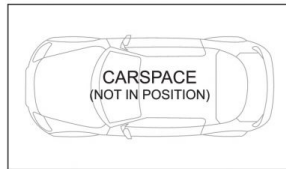
**View** : <https://www.alexkarbon.com.au/lease/vic/inner-city/north-melbourne/residential/townhouse/6209300>



**Zac Karvoun**  
**03 9326 8883**



UPPER LEVEL



Disclaimer: Please note plans are indicative only and not drawn to exact scale. All dimensions are approximate. Potential buyers should satisfy themselves of any pertinent matters.