

**15/68-74A Chapman Street North Melbourne VIC**

**4**  **3**  **2** 

Perfectly positioned in a wide tree-lined street within the prized University High School zone, Errol Street cafes, Royal Park, public transport options, hospital and university precincts are all within easy reach.

Quality lifestyle within this luxurious development of luxury Town Residences expanding over four levels plus a landscaped rooftop terrace offering a luxurious space to entertain guests while enjoying views across the skyline.

The private residence is light-filled throughout with its expansive kitchen and living areas, 3/4 spacious bedrooms, 3 bathrooms, optional elevator\* and a secure two car tandem garage.

The interiors have been designed with impeccable attention to detail. Featuring oak floorboards, extensive custom

**Building Size** : 243 sqm  
**View** : <https://www.alexkarbon.com.au/sale/vic/inner-city/north-melbourne/residential/townhouse/6209613>



**Charles Bongiovanni**  
**03 9326 8883**



**Alex Puglia**  
**03 9326 8883**

NORTH MELBOURNE

# Chapman

TOWNHOUSE TYPE B

3 BED | 3 BATH | 2 LIVING  
AREAS | 2 CAR SPACES

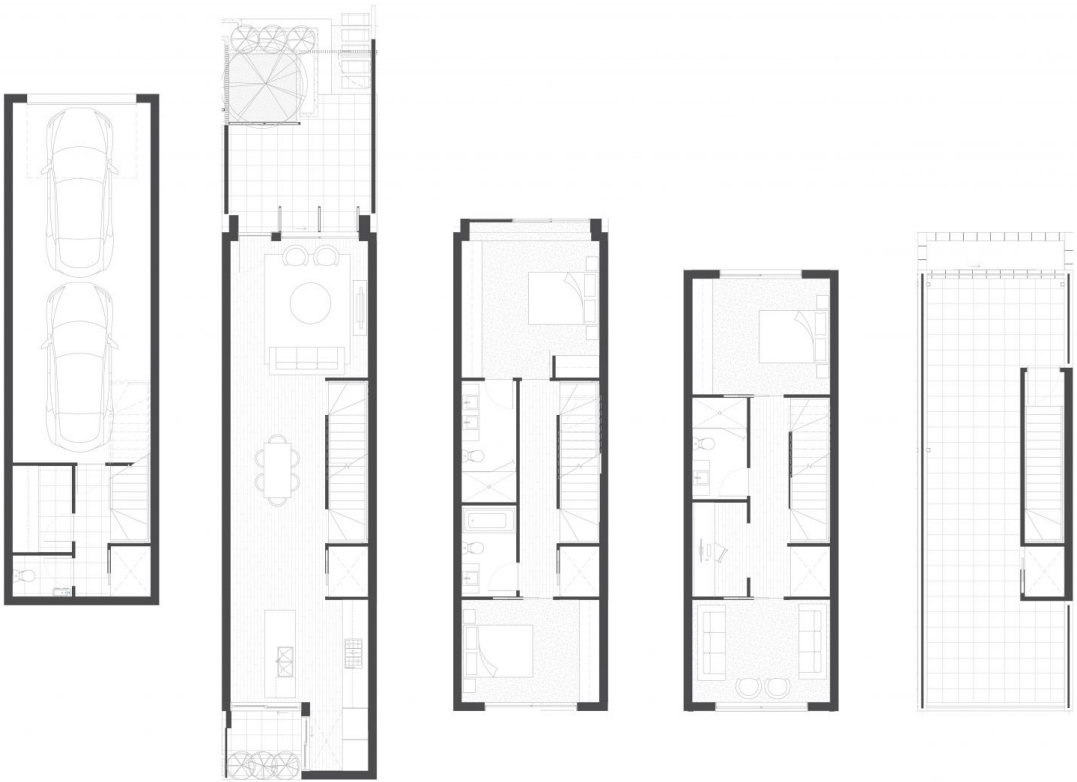
Chapman Street



Internal Area • 243 m<sup>2</sup>  
External Area • 86 m<sup>2</sup>  
Total Area • 329 m<sup>2</sup>



This floor plan shows the intent and general layout and may not depict the finished state of the property. Furniture and ancillary objects depicted are not included. Dimensions and specifications are subject to change. This document does not constitute an offer or a contract of sale for any property referred to or shown hereon.



BASEMENT

GROUND FLOOR

FIRST FLOOR

SECOND FLOOR

ROOFTOP TCE