

G7/22 Nicholson Street Fitzroy North VIC

3  2  2 

This townhouse offers a quiet slice of Fitzroy life, with over 190sqm of internal space the home offers spacious open plan living, 3 double bedrooms, main with ensuite and walk-in robe, 2nd bathroom, two study spaces plus the added bonus of a large separate utility room ideal for a gym, home office or kids play room. It really is a great size for a family and also features a deep private garden.

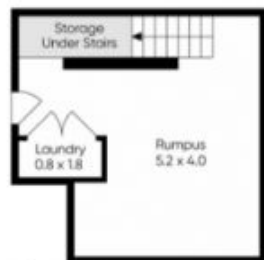
Further the home features high quality finishes inspired by Zunica Designs that include stunning timber floors, stone benchtops, Miele appliances and reverse cycle AC. Lastly a great feature is the secure basement parking with direct access straight in the home.

In one of Melbourne's most sort after suburbs, within in walking distances to trendy restaurants, quirky shops and endless entertainment in Brunswick and Fitzroy, cycling routes, Merri Station, Trams and RMIT University.

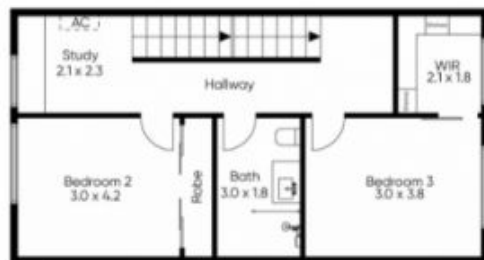
View : <https://www.alexkarbon.com.au/lease/vic/inner-city/fitzroy-north/residential/townhouse/6209671>



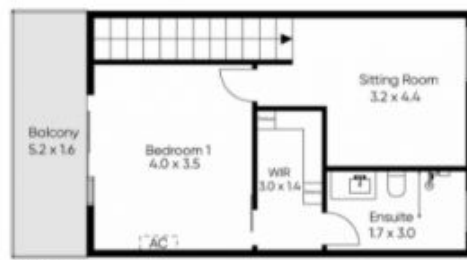
Tasma Bogdanovic
03 9326 8883



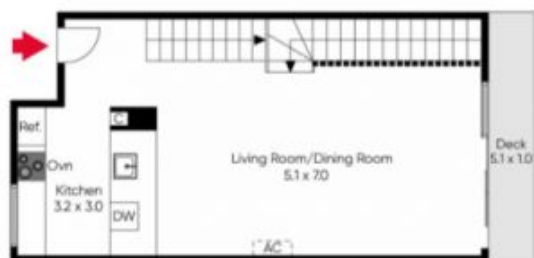
Ground Floor



2nd Floor



3rd Floor



1st Floor



(Not in Position)



Site Plan

Produced by DIAKRIT

The site plan and floor plan are not to scale; measurements are indicative and in metres. Bushes and trees are placed for illustration purposes.
Plans should not be relied on. Interested parties should make and rely on their own enquiries.