

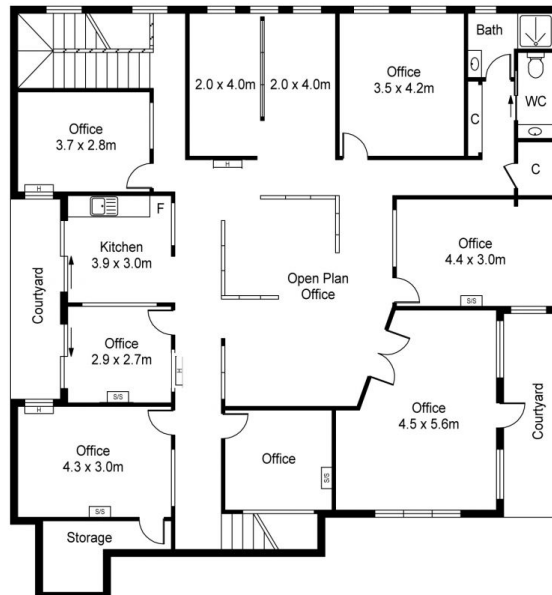
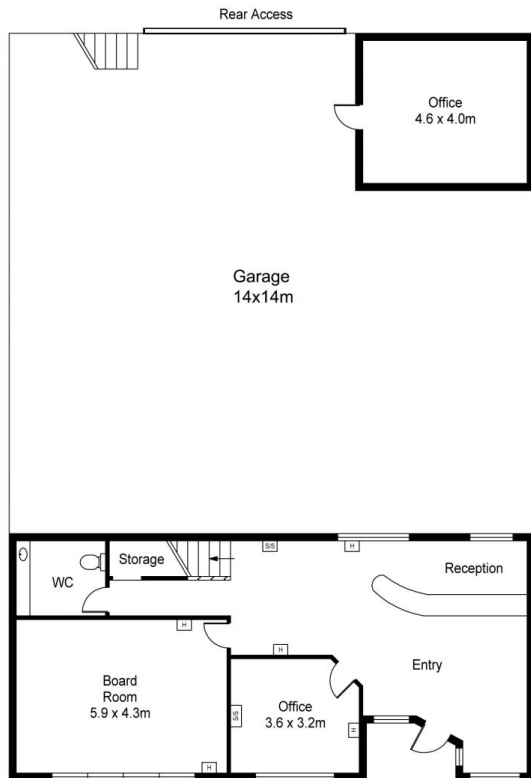
30 Courtney Street North Melbourne VIC

Outstanding 2 level converted office warehouse
Tightly held city edge location
300m² of architecturally designed split level space
Immaculately presented
Substantial entry foyer and reception area
Fully fitted open plan office area featuring exposed timber rafters
Large boardroom & separate meeting room
Modern amenities on both levels including shower, kitchen/ breakout area with access to outdoor terrace
Ample storage, plus attic space, hydronic heating & air conditioning throughout
Excellent size land of 327m²
Ideal for owner occupier, Investor or developer
8 secure car parking spaces at the rear, accessed via laneway from Blackwood Street
Queensberry Street - 200m

Building Size : 300 sqm
Land Size : 327 sqm
View : <https://www.alexkarbon.com.au/sale/vic/inner-city/north-melbourne/commercial/offices/6209779>



Alex Puglia
03 9326 8883



Scale in metres. Indicative only. Dimensions are approximate. All information contained herein is gathered from sources we believe to be reliable. However we cannot guarantee its accuracy and interested persons should rely on their own enquiries



30 Courtney Street, North Melbourne