

488 Abbotsford Street North Melbourne VIC

4 1 1

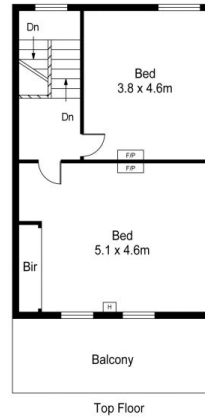
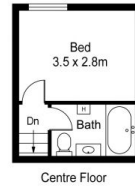
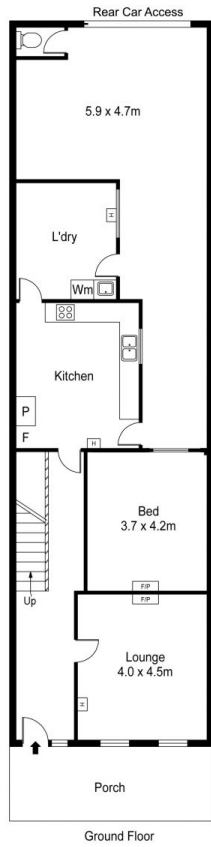
This renovated double storey Victorian grand terrace offers four generous bedrooms, central bathroom, separate formal lounge room. A modern kitchen which has been recently renovated, complete with gas appliances and a dishwasher. Hydronic heating and air conditioners in every room. Private outdoor area with car access. All just metres away from the tram stop, hospitals, parklands and local cafes and eateries and zoned in the highly sought after Uni High school zone and North Melbourne Primary School.

Price : \$1,160 per week

View : <https://www.alexkarbon.com.au/lease/vic/inner-city/north-melbourne/residential/terrace/6209784>



Sharon Hibberd
03 9326 8883



488 Abbotsford Street, North Melbourne