



102/211 Peel Street North Melbourne VIC

2 2 1

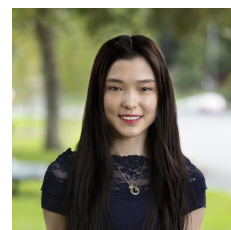
This as new apartment is ideally located for convenience Melbourne CBD Living. Just 5 minutes from Melbourne University, RMIT and Queen Victoria Market, 57 & 59 Tram Stops is at your doorstep, Local Shops & Cafes just around the Corner.

- . Two spacious and bright bedroom
- . Main bedroom with ensuite
- . Living room with timber floor
- . Open plan kitchen with stainless steel appliances
- . Private balcony with beautiful scenery
- . Split System Heating & Cooling System
- . Security car parking

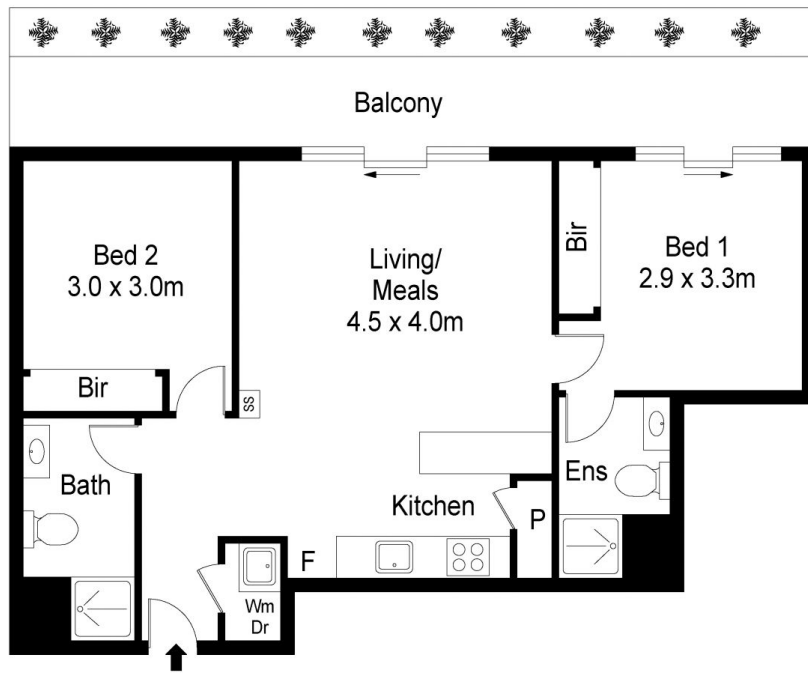
View : <https://www.alexkarbon.com.au/lease/vic/inner-city/north-melbourne/residential/apartment/6286163>



Tasma Bogdanovic
03 9326 8883



Nancy Yang 03 9326 8883



Not In Actual Location



Scale in metres. Indicative only. Dimensions are approximate. All information contained herein is gathered from sources we believe to be reliable. However we cannot guarantee its accuracy and interested persons should rely on their own enquiries



102/211 Peel Street, North Melbourne