

25 Saltley Street South Kingsville VIC

3 1 2

In a wonderfully convenient inner west neighborhood with easy access to the area's key lifestyle attractions, this single-level home providing a range of exciting options for those looking to move in and enjoy.

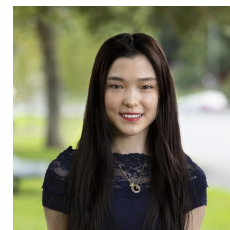
Immediately comfortable, the home's current floor plan comprises of three bedrooms (all with BIRs), a central bathroom, kitchen with all electric cooking, a full-sized laundry and a separate family/living area. Step outside to the large outdoor space and into the huge north-facing backyard with a double lock up garage.

Outstanding options in an enviable location walking distance to cafes, Newport Lakes parkland, schools, childcare centres and local shops. Also close to both Spotswood and Newport train stations as well as easy access to Williamstown beach and the CBD.

View : <https://www.alexkarbon.com.au/lease/vic/west/south-kingsville/residential/house/6360500>



Tasma Bogdanovic
03 9326 8883



Nancy Yang 03 9326 8883