



12 Edson Road Mickleham VIC

3 2 2

All the hard work has been done to deliver a gorgeous modern home ready to be enjoyed, with exciting appeal for young families and downsizers alike. It features a clever layout with open-plan living and dining flanked by a sun-splashed alfresco courtyard, a quality kitchen and breakfast bar, master suite and separate kids' sleeping zone with two further bedrooms (BIR) and a central bathroom, ducted heating, split system A/C and a well-sized separate laundry.

- ? Near-new home in a family-friendly location
- ? Parents' master suite tucked away for privacy
- ? Sunny north-facing living and dining
- ? Stunning modern kitchen with walk-in pantry
- ? Walk to kinders, childcare & local schools

Within the beautiful Annadale Estate in a fast-growing pocket of Melbourne, this wonderful new community has been designed so that every lifestyle amenity is within easy

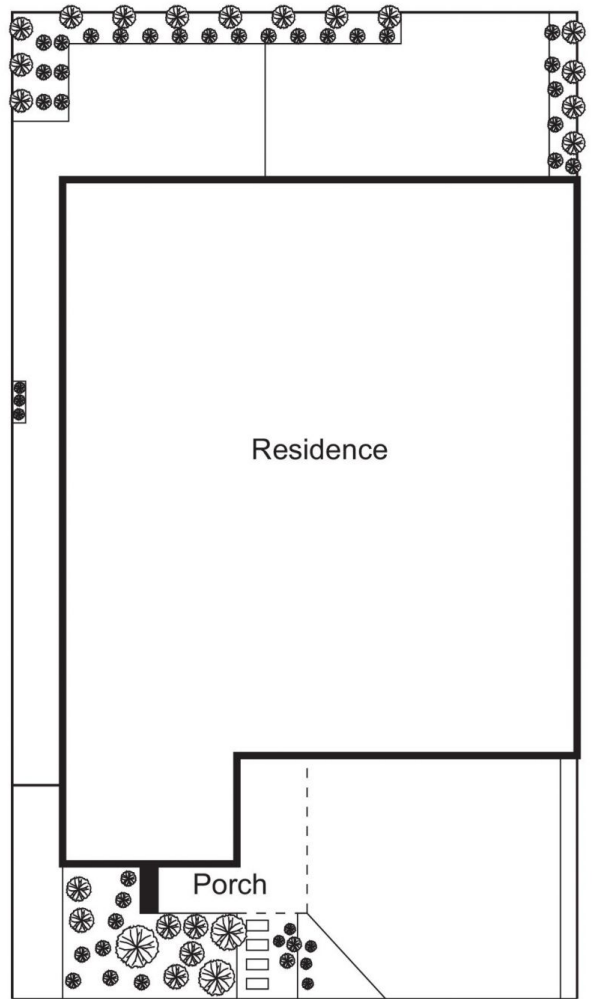
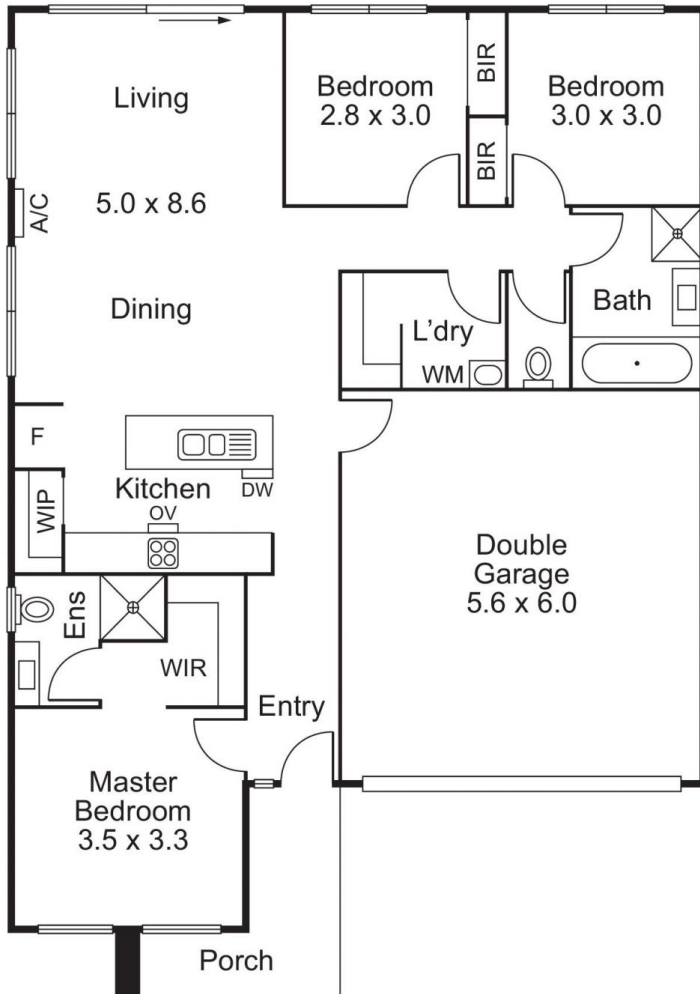
View : <https://www.alexkarbon.com.au/sale/vic/north/mickleham/residential/house/6483154>



James Rapita
9326 8883



Alex Puglia
03 9326 8883



Every care has been taken to verify the accuracy of the net internal area. Prospective purchasers are advised to make their own enquiries to satisfy themselves in all respects.