






3/415 Abbotsford Street North Melbourne VIC

3  2  2 

Rarely do inner city properties boast such abundant indoor and outdoor space, but this sensational two-storey home has it all. Full of natural light, this 3-bedroom beauty offers the ideal setting for relaxing, working and entertaining at home, complete with a huge sunny terrace off the central open-plan living/dining area and ample study/home office options.

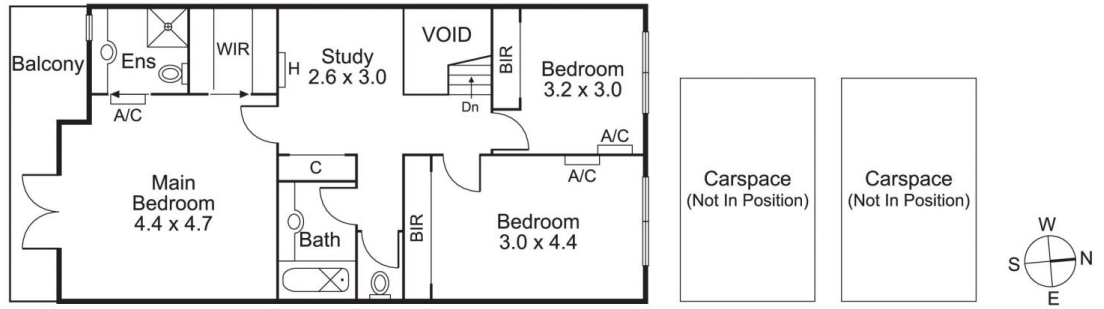
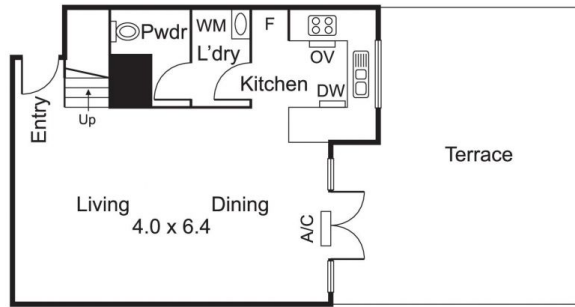
- ? Spacious living opposite Pleasance Gardens
- ? Stunning north-facing entertainer's terrace
- ? Oversized bedrooms, master with balcony
- ? Second living/retreat or home office
- ? Two secure car parks and trams on the doorstep

Low maintenance with luxurious proportions throughout, it also features a huge master bedroom with full-width balcony, ensuite and WIR, a versatile upstairs lounge or retreat, large corner kitchen with stone benchtops and stainless steel appliances, split system heating and A/C,

Building Size : 134 sqm
View : <https://www.alexkarbon.com.au/lease/vic/inner-city/north-melbourne/residential/townhouse/6587057>



Jess Pfeiffer
03 9326 8883



Every care has been taken to verify the accuracy of the net internal area.
Prospective purchasers are advised to make their own enquiries to satisfy themselves in all respects.