

## 649 Queensberry Street North Melbourne VIC

2 1

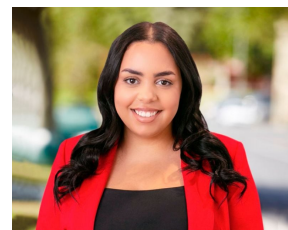
With its attractive façade and well-presented interior, this classic Victorian terrace presents a terrific lifestyle opportunity within easy reach of everything North Melbourne has to offer. Classic floor-plan features a side hallway accessing two double bedrooms, central lounge through to galley style kitchen area, functional bathroom and separate laundry. A generous rear garden complete with extensive size yard. Errol street shops and North Melbourne Train station is just a few minutes' walk away whilst the tram stop is right at your front door! Close to local schools, shops/cafes, Citylink access, hospital/university precincts, University high school zone, and the wide open spaces of Royal Park.

Alexkarbon Real Estate  
241 Union Road, Ascot Vale  
122 Errol Street, North Melbourne

**Building Size** : 65 sqm  
**Land Size** : 88 sqm  
**View** : <https://www.alexkarbon.com.au/lease/vic/inner-city/north-melbourne/residential/house/6902525>



**Andy Lusi**  
03 9376 7077



**Alyssa Pavone**  
03 9376 7077

