



271 Ascot Vale Road Moonee Ponds VIC

4 1 4

Occupying a prominent and coveted Poets' corner position, this handsome four bedroom double fronted Edwardian residence presents fantastic potential for renovation/development, plus commercial consulting and medical opportunities (STCA). Presenting in original condition with loads of period details it presents soaring 12ft ceilings, Baltic timber flooring, high profile skirting, and ornate timber fretwork. Offering a separate living and meals zone with split system A/C, a storeroom/study space adjoining the original kitchen with large work area and gas cooking. Spacious bedrooms, two oversized boasts decorative fireplaces and boxed windows, further complemented with a central bathroom with shower/bath, rear sunroom/laundry, and separate WC that opens out to an expansive backyard offering a tandem lockup garage, additional OSP via roller door (Byron Street), a workshop/storage area, and there's enough room for a

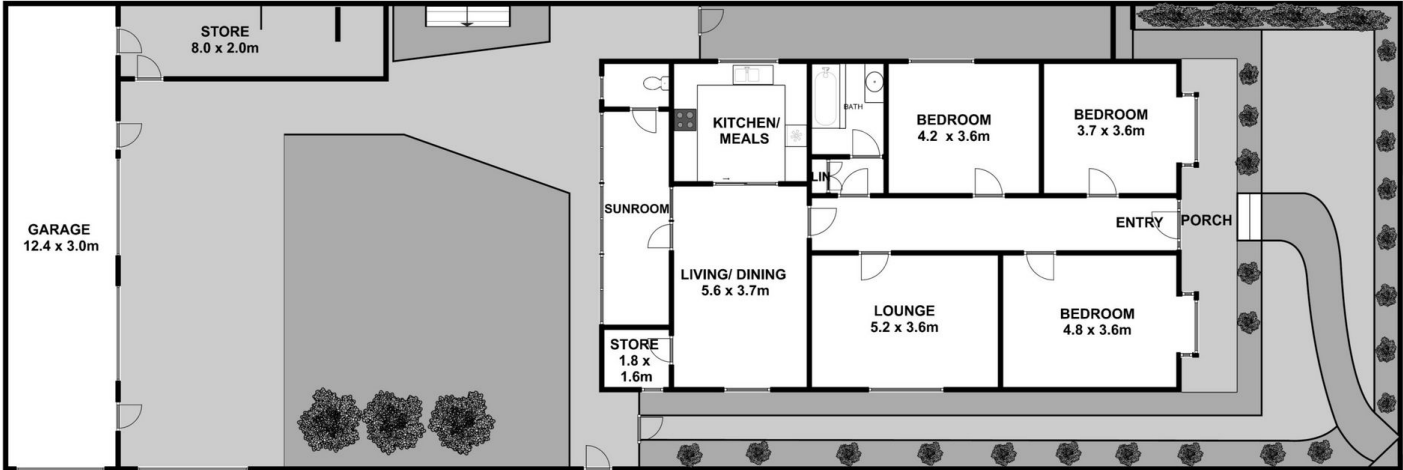
Land Size : 518 sqm
View : <https://www.alexkarbon.com.au/sale/vic/north/moonee-ponds/residential/house/7084362>



Alex Puglia
 03 9326 8883



Jacqueline Iversen
 03 9326 8883



271 Ascot Vale Road Moonee ponds

Total Land Size : (approx) 518 sqm

This plan is a sketch for illustration only
 All measurements are internal & approximate
 Produced by open2view.com