



12/38 Lawson Street Essendon VIC

2 2 1

This cleverly designed, contemporary two bedroom townhouse opposite Montgomery Park, offers an exciting urban lifestyle, ideal for professionals. Secure video intercom entry reveals spacious accommodation of two bedrooms (BIR), one with private courtyard, accessing two full, chic bathrooms.

Luxurious open plan living includes a sleek kitchen featuring stone benchtops, Blanco stainless steel appliances, deep pot and soft close drawers, ample cabinetry and huge pull-out pantry.

The vast, light filled living space boasts polished timber floors plus a split system and spills onto an entertaining balcony.

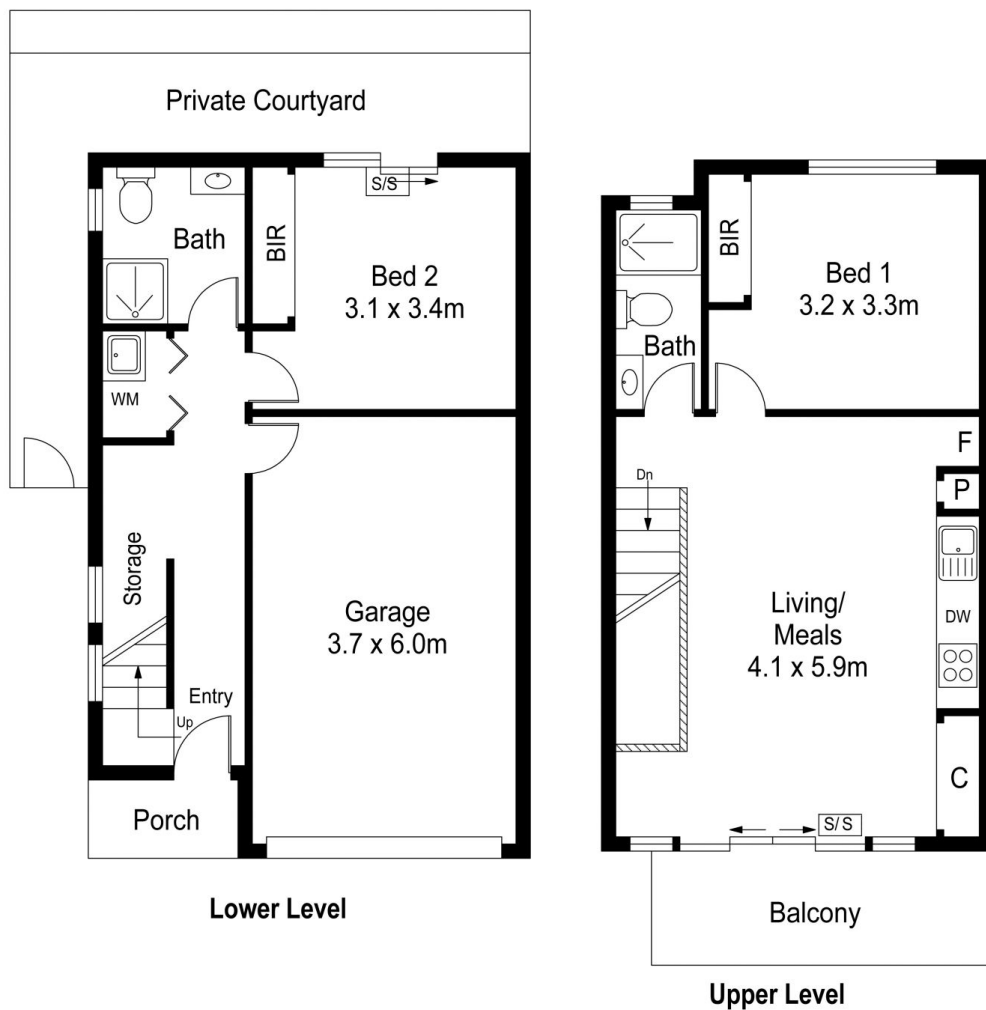
Also with European laundry plus remote lockup garage with stylish storage and direct home access.

A walk to Queens Park, Essendon train station and Pascoe Vale Road tram, it's in a class of its own!

View : <https://www.alexkarbon.com.au/lease/vic/north/essendon/residential/townhouse/7173359>



Tasma Bogdanovic
03 9326 8883



12/38 Lawson Street, Essendon