



7/24-26 Sandown Road Ascot Vale VIC

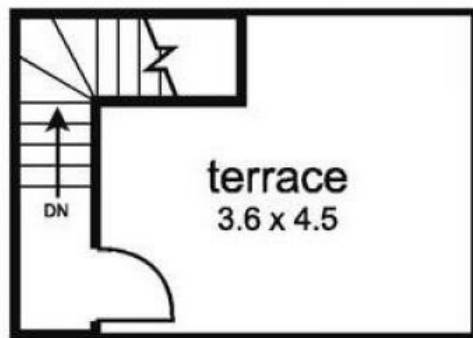
2  2  1 

Luxurious dimensions, inclusions and a coveted location combine to create the utmost in easy modern living with this contemporary designed residence. In a boutique block, its crowning glory is a sun-filled roof top terrace, dining space and equipped with Miele kitchen appliances showcasing Quantus Quartz Ash grey stone benches and abundant storage options. Spanning over 3 levels all bedrooms include built-in-robos. Additional highlights comprise separate bathrooms/stone vanities, separate laundry lots of storage, split-system units, secure entry, With automated access to basement car park with one car space plus storage unit. Walking distance to Flemington Racecourse, Melbourne Showgrounds Village and train station with excellent access to vibrant Union Road cafés, Docklands precinct plus university and hospital districts further enhances an executive choice, Ascot Vale station, buses and CityLink all nearby.

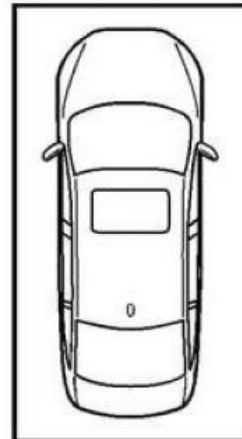
View : <https://www.alexkarbon.com.au/lease/vic/north/as-cot-vale/residential/townhouse/7205348>



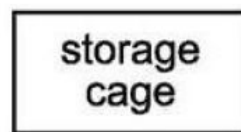
Tasma Bogdanovic
03 9326 8883



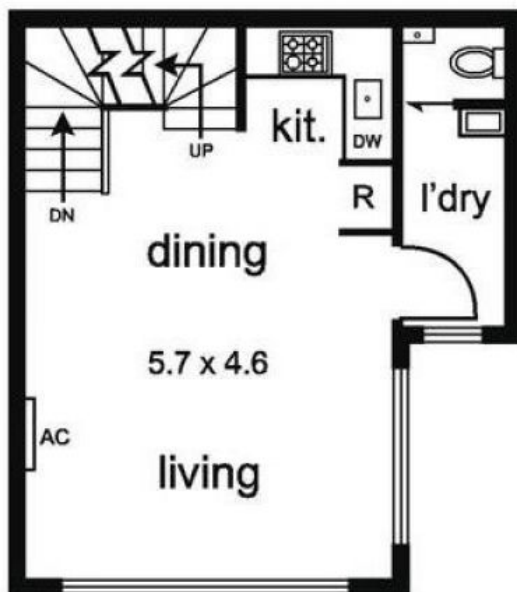
ROOF TOP



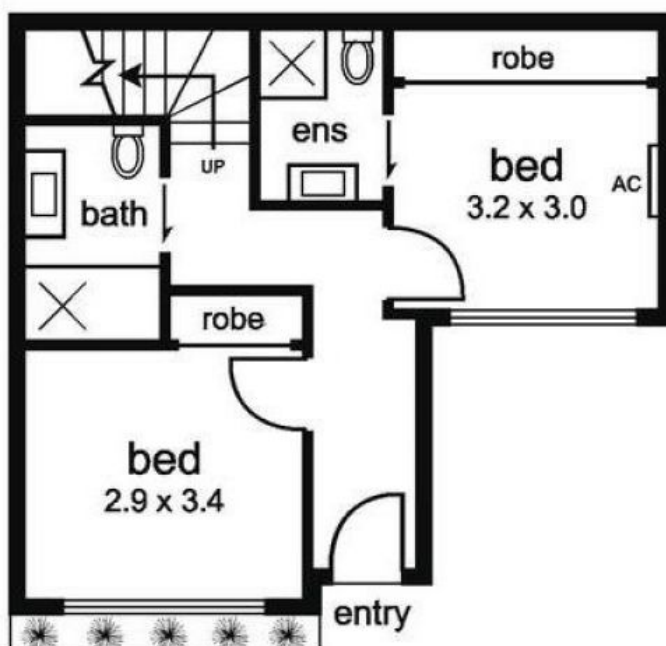
UNDERCOVER
not in position



not in position



FIRST FLOOR



GROUND FLOOR