



**22 Roseland Crescent Hoppers Crossing VIC**

3 1 2

This 3 bedroom house is located in the ever so popular suburb of Hoppers Crossing & within easy walking distance to primary schools, Aqua Pulse Swimming Pool and close proximity to the train station, medical centre and (1km Approx.) to Werribee Pacific Shopping Plaza. In addition, easy access to the freeway makes this home location so special.

**View :** <https://www.alexkarbon.com.au/lease/vic/west/hoppers-crossing/residential/house/7216060>

Comprising 3 good sized bedrooms, central bathroom & toilet and an open plan dining & living area. Built on a 538m<sup>2</sup> (approx.) block, this property provides a backyard that is perfect for kids, pets and family time.

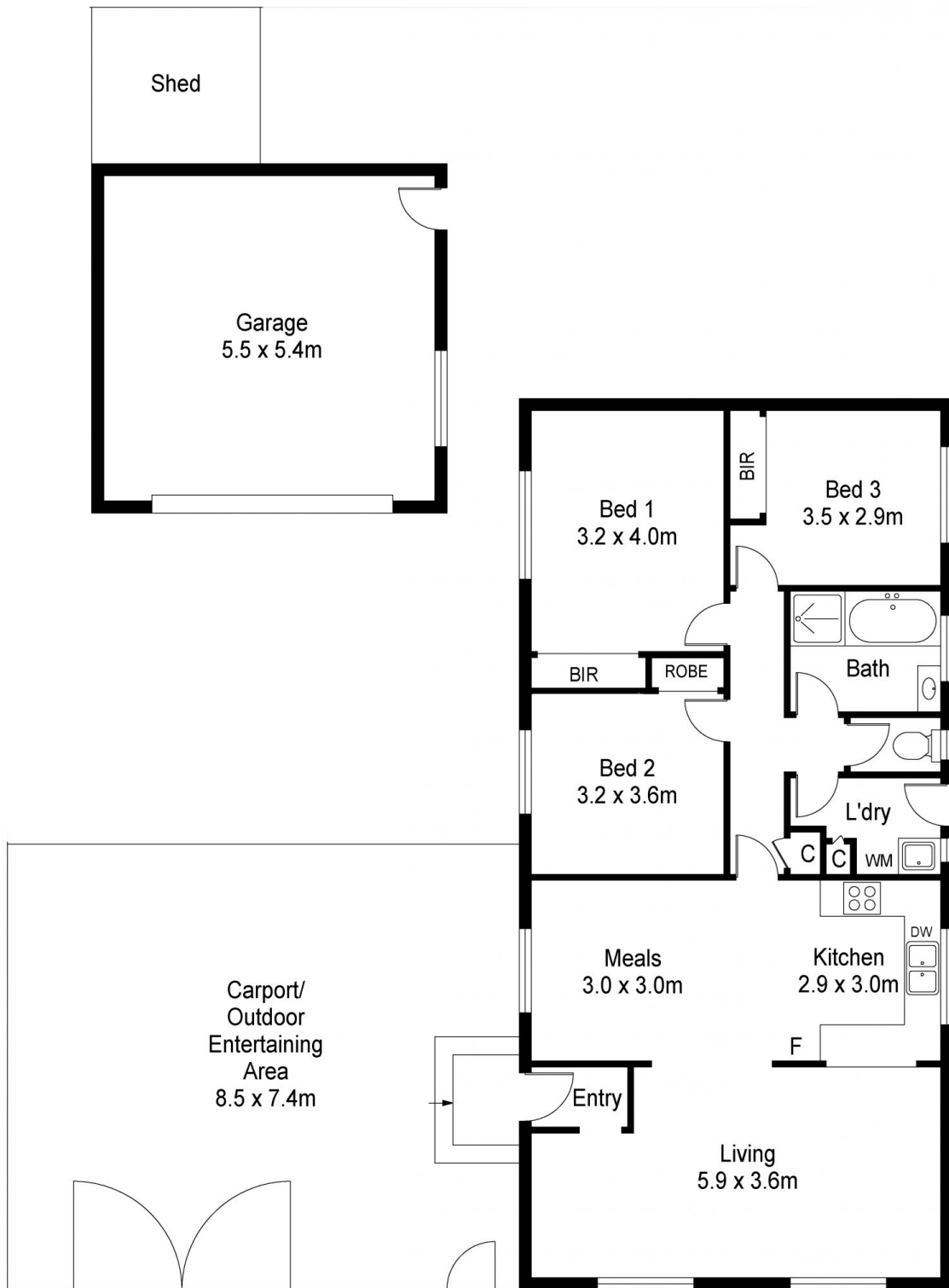


**Tasma Bogdanovic**  
03 9326 8883

Features include:

Contemporary kitchen with stainless steel cooking appliances including oven, grill & gas cook top

Undercover entertaining/BBQ area



Scale in metres. Indicative only. Dimensions are approximate. All information contained herein is gathered from sources we believe to be reliable. However we cannot guarantee its accuracy and interested persons should rely on their own enquiries



## 22 Roseland Crescent, Hoppers Crossing