



**600-602 Queensberry Street North Melbourne VIC**

4 🛏 1 🚿 1 🚗

On 196m2 and zoned for University High School, it will reward the keen renovator or present an outstanding development opportunity (STCA) with dual access and zoning for mixed use in a highly sought-after city-edge location. Available are plans and permits for 3 dwellings. The property as is presents hallmark period features including decorative high ceilings and classic central hallway with corbeled archway, this double-fronted four bedroom Victorian boasts a stunning elevated rear terrace with expansive north-facing rooftop views. Behind its period façade, there's a large living/dining room, galley kitchen, big bedrooms, practical bathroom, plentiful storage and a deep back garden with roller door and off-street parking. There's a café only two doors away, with the best of North Melbourne's eclectic dining, cultural, shopping and parkland experiences all within walking distance, plus quick access to trams, trains, buses and the CBD.

**Price** : \$ 1,370,000

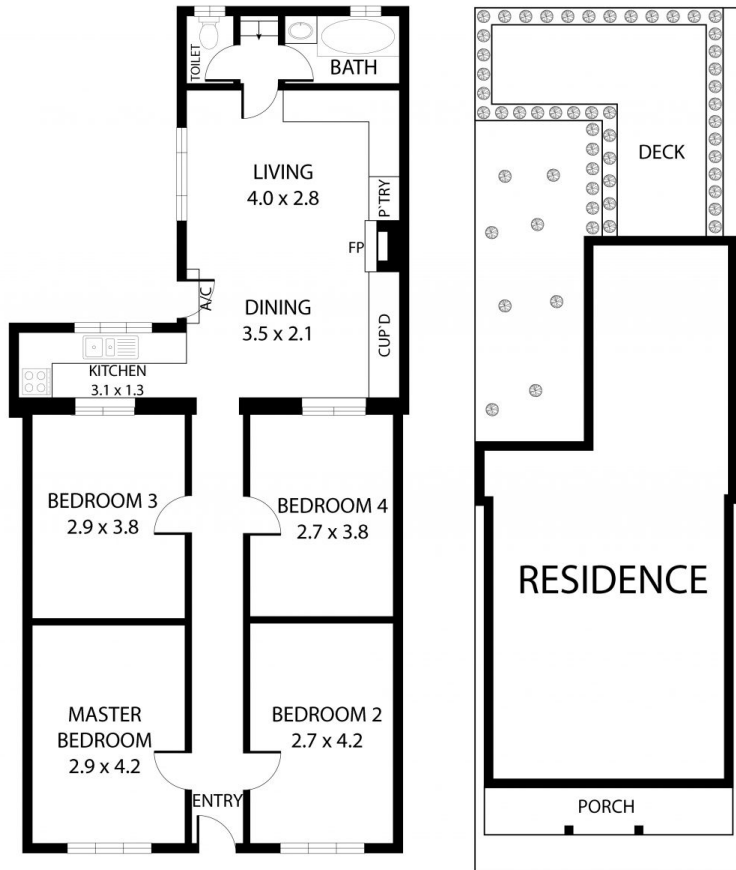
**View** : <https://www.alexkarbon.com.au/sale/vic/inner-city/north-melbourne/residential/house/7250486>



**Alex Puglia**  
03 9326 8883



**Jacqueline Iversen**  
03 9326 8883



600 Queensberry Street, North Melbourne 3051