



**55 Brunswick Road Brunswick East VIC**

4 1 1

Presenting this delightful home, the original features are enhanced through modern composition to provide a space and style unrivalled by its neighbours. Boasting four spacious bedrooms sunlight living area. Ideally Located opposite Brunswick South Primary School, a short distance to Inner Cir Rail Trail, Princess Park, the CBD, and Carlton's famous eateries.

**View** : <https://www.alexkarbon.com.au/lease/vic/north/brunswick-east/residential/house/7262325>

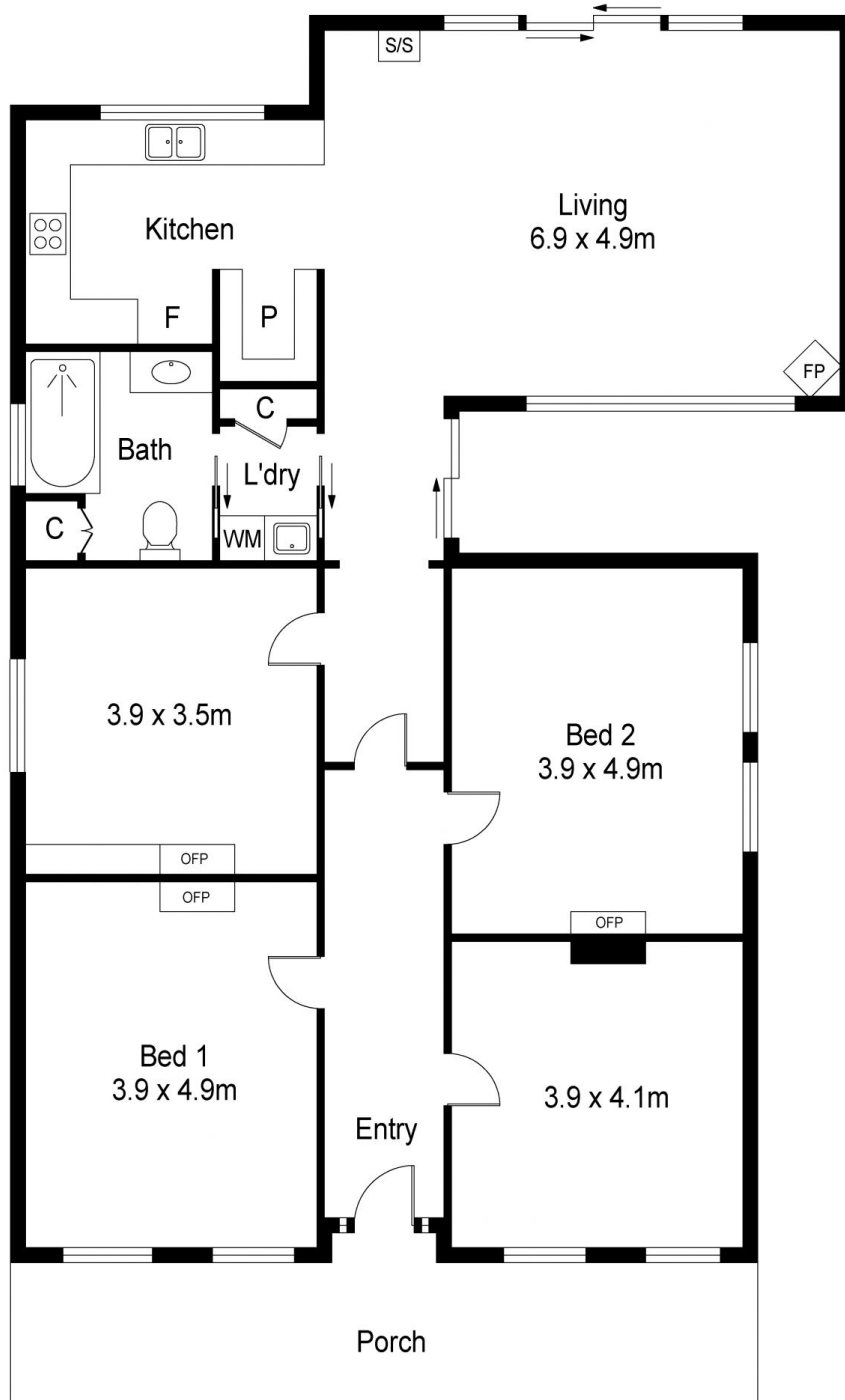
Ideal for those looking for versatility and comfort in their lifestyle, this spacious abode offers flexibility for home and office in one. Enhanced by its leafy surroundings and CBD cameos, this property is nearly impossible to compare!



**Adreana Stranges**  
03 9326 8883

**Features:**

- \* Natural open-plan living
- \* Full-equipped kitchen
- \* Spacious outdoor area



Scale in metres. Indicative only. Dimensions are approximate. All information contained herein is gathered from sources we believe to be reliable. However we cannot guarantee its accuracy and interested persons should rely on their own enquiries



## 55 Brunswick Road, Brunswick East