

## 12/28 Sandown Road Ascot Vale VIC

2  1  1 

"The Corham" is a new bespoke construction perched in the inner-city yet framed by quiet suburbia, abundant leafy parks and a leisurely café culture. This two bedroom townhouse has a magnificent level of comfort and convenience paired with an elegant design showcasing quality materials in tones of grey, white, black with the added warmth of timber. The upstairs open plan seamlessly transitions to the wide private balcony, perfect for entertaining, while the designer kitchen displays s/s SMEG appliances, including dishwasher. The style and substance continue downstairs in the double bedrooms featuring soft carpeting and BIRs. Further inclusions are video intercom, underground carpark, split-system inverters, timber floorboards, stone benchtops and fully tiled bathroom. Couples and professionals will love the walking/biking distance to city-bound trains/trams, Ascot Vale Leisure Centre, Flemington Racecourse, Melbourne

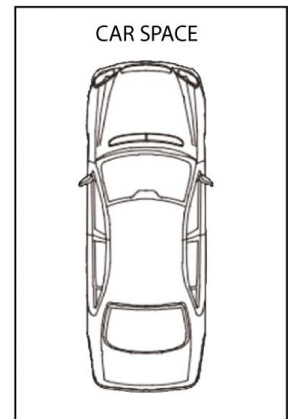
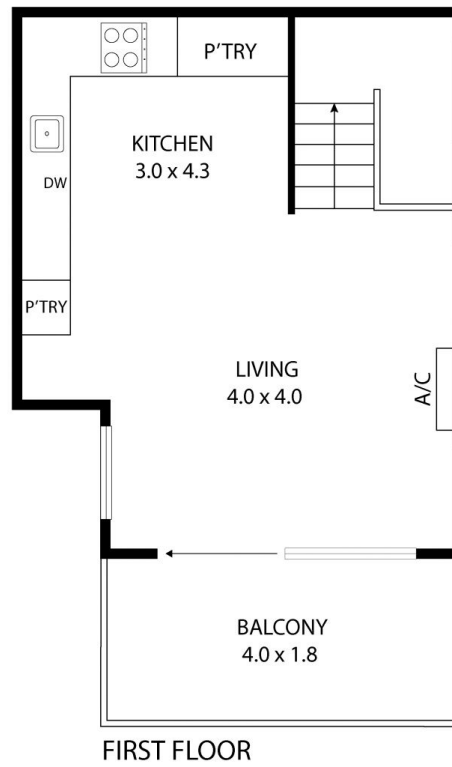
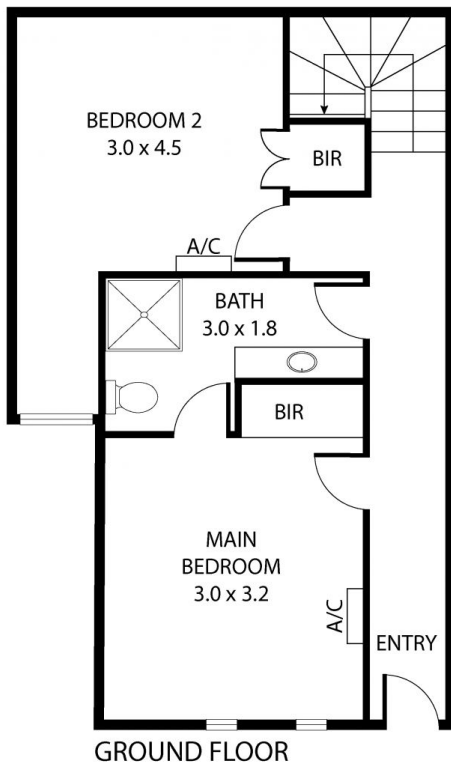
**View :** <https://www.alexkarbon.com.au/sale/vic/north/ascot-vale/residential/townhouse/7303021>



**Andy Lusi**  
03 9376 7077



**Alex Puglia**  
03 9326 8883



12/28 Sandown Road, Ascot Vale 3032  
TOTAL APPROX. FLOOR AREA 64 SQ.M  
Whilst every attempt has been made to ensure the accuracy of the floor plan contained here, measurements of doors, windows, rooms and any other items are approximate and no responsibility is taken for any error, omission, or misstatement. This plan is for illustrative purposes only and should be used as such by any prospective purchaser.