

## 11/28 Sandown Road Ascot Vale VIC

2  1  1 

"The Corham" is a new bespoke construction perched in the inner-city yet framed by quiet suburbia, abundant leafy parks and a leisurely café culture. This two bedroom townhouse has a magnificent level of comfort and convenience paired with an elegant design showcasing quality materials in tones of grey, white, black with the added warmth of timber. The upstairs open plan seamlessly transitions to the wide private balcony, perfect for entertaining, while the designer kitchen displays s/s SMEG appliances, including dishwasher. The style and substance continue downstairs in the double bedrooms featuring soft carpeting and BIRs. Further inclusions are video intercom, underground carpark, split-system inverters, timber floorboards, stone benchtops and fully tiled bathroom. Couples and professionals will love the walking/biking distance to city-bound trains/trams, Ascot Vale Leisure Centre, Flemington Racecourse, Melbourne

**View :** <https://www.alexkarbon.com.au/lease/vic/north/as-cot-vale/residential/townhouse/7379180>



**Andy Lusi**  
03 9376 7077

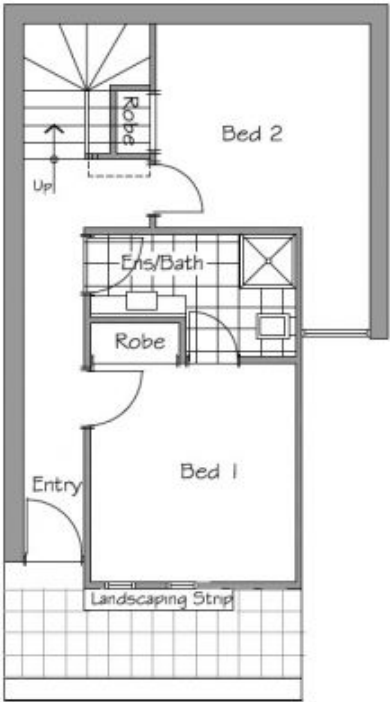


**Alyssa Pavone**  
03 9376 7077

Townhouse  
Eleven

Ground Floor Area	49.4m <sup>2</sup>
First Floor Area	52.5m <sup>2</sup>
Balcony	8.9m <sup>2</sup>
Total Floor Area	90.6m <sup>2</sup>

Bedrooms	2
Bathrooms	1
Car	1



GROUND FLOOR



FIRST FLOOR

Please note that these floor plans were produced prior to completion of construction and are indicative only and not to scale. Changes may be made during development. Dimensions, floor levels and the layout, fixtures and specifications are subject to change without notice in accordance with the provisions of the Contract of Sale. The furniture depicted is not included with any sale and should not be taken to indicate the the position of power points, TV connection points and the like. Prospective purchasers must rely on their own enquiries. Balconies and columns necessary for services and structure may not be depicted. © 2020/2021 Crown Land

