



299 Flemington Road North Melbourne VIC

4 1

Nestled among the most picturesque of leafy boulevards, 'Park View' presents enhanced Victorian elegance opposite the lush expanses of Royal Park.

Infinitely endearing, a 19th century façade displays the era's hallmark features, with a high-set entry hall illustrating intricate detail. Doubling as an expansive master suite, a front sitting room shows an original fireplace with marble mantel, with a second, timber fireplace a charming centrepiece to an adjoining living zone. With clever additions throughout, a smart skylight bathes each level in natural rays, while the plan's rear displays an open living/dining zone and covered alfresco, served by a gourmet kitchen with timber benchtops and stainless-steel appliances.

A dedicated study space adorns a flowing second storey,

Price : \$ 1,465,000

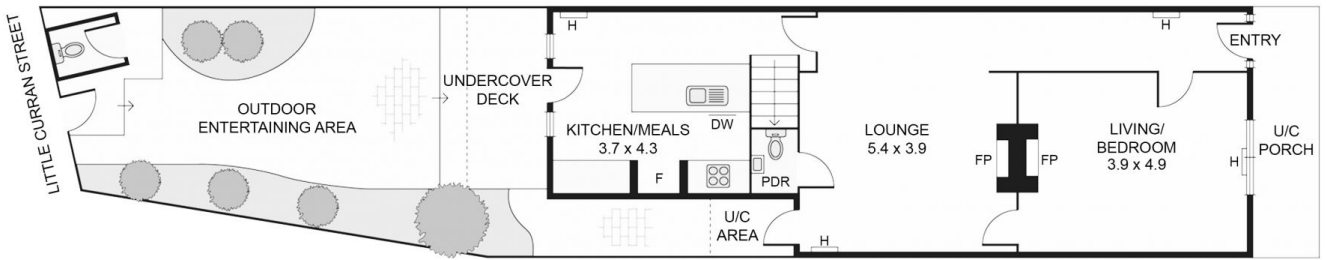
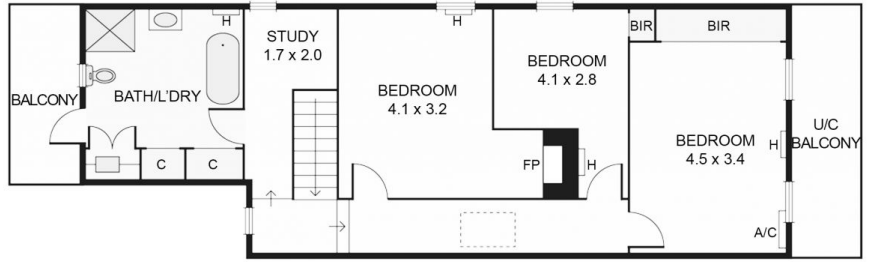
View : <https://www.alexkarbon.com.au/sale/vic/inner-city/north-melbourne/residential/house/7443120>



Alex Puglia
03 9326 8883



Jacqueline Iversen
03 9326 8883



Disclaimer: Please note plans are indicative only and not drawn to exact scale. All dimensions are approximate. Potential buyers should satisfy themselves of any pertinent matters.