



G6/139 Chetwynd Street North Melbourne VIC

1 1 1

In one of North Melbourne's finest tree-lined streets, this light-filled contemporary apartment in the sought-after University high school zone and close to the hospital precinct, Melbourne University, the Vic Market and public transport is an ideal low-maintenance residence. Including video intercom, lift and basement parking, this stylish home offers a stunning master bedroom with built-in-robies, a large living/dining area flowing to a screened balcony, smart kitchen comprising stone benchtops, quality appliances and euro laundry, and a fully-tiled bathroom with walk-in shower. Features include split-system air conditioning and premium fittings.

Land Size : 52 sqm
View : <https://www.alexkarbon.com.au/lease/vic/inner-city/north-melbourne/residential/apartment/7463001>



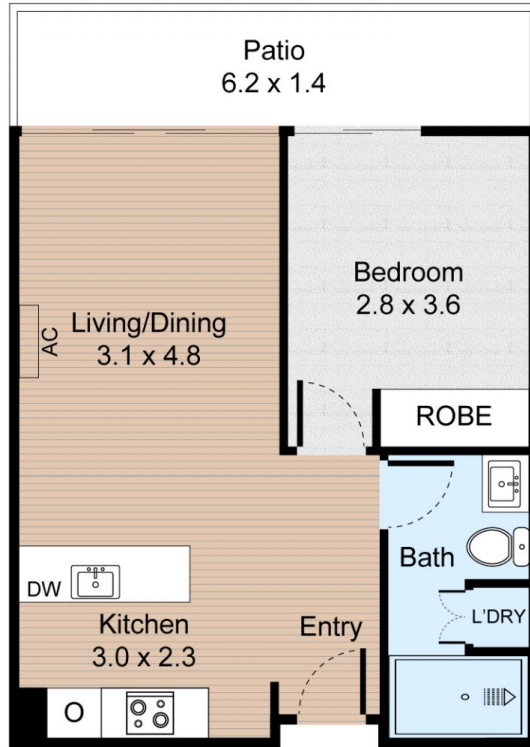
Andy Lusi
 03 9376 7077



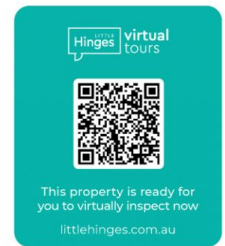
Alyssa Pavone
 03 9376 7077

Unit 6, 139 Chetwynd Street, North Melbourne

1 Bed 1 Bath



Internal : 43m²
External : 9m²



FLOOR PLAN



All information contained herein is gathered from our 3D scanned tours via Matterport. Whilst the 3D scanning technology is very accurate we cannot guarantee its accuracy and interested parties should rely on their own enquiries.