



1 Snowdon Close Keilor Downs VIC

3  2  2 

Tucked away in a wonderfully quiet and convenient Keilor Downs cul-de-sac, this single-level home presents a ready-to-enjoy family lifestyle opportunity with its flexible floorplan, quality enhancements and immaculate garden surrounds (land approx 653sqm).

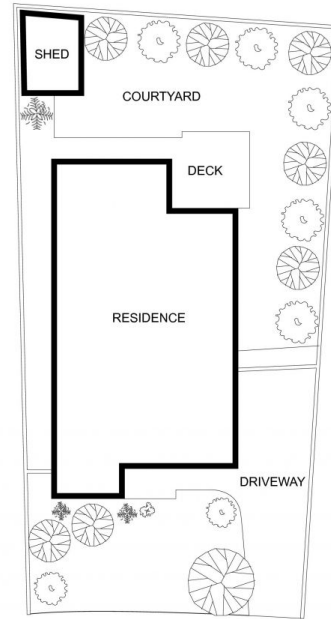
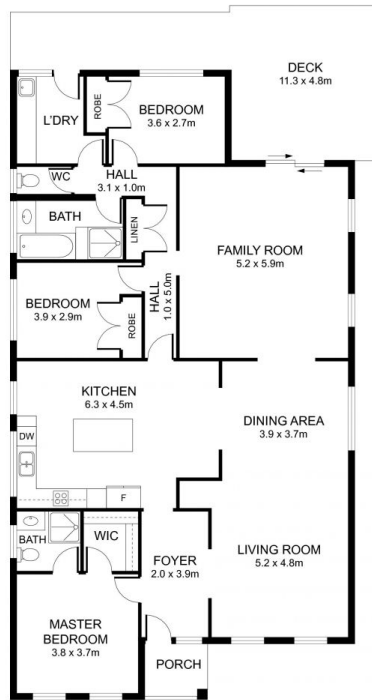
Filled with natural light, the home itself is absolutely pristine comprising a large master bedroom with WIR and private ensuite, as well as 2 additional bedrooms (BIRs), spotless main bathroom and separate WC.

Further underlining its fine family credentials is the inclusion of a front lounge, rear living room with study alcove and central dining area accompanied by a superb stone-bench kitchen with island breakfast bar, soft-close cabinetry, stainless steel cooking appliances and dishwasher.

Land Size : 653 sqm
View : <https://www.alexkarbon.com.au/sale/vic/north-west/keilor-downs/residential/house/7526471>



Andy Lusi
 03 9376 7077



INT: 173m²
EXT: 37m²
TOTAL: 210m²
LAND SIZE: 650m²

Plans shown are for presentation purposes only and are not part of any legal document or title. They are subject to errors, omissions, inaccuracies and should not be used as a sole and accurate reference. Interested parties should make their own inquiries using independent sources.