



**10/38 Lawson Street Essendon VIC**

2 2 1

This cleverly designed, contemporary two bedroom plus study townhouse opposite Montgomery Park, offers an exciting urban lifestyle, ideal for professionals.

**Price** : \$ 630,000  
**View** : <https://www.alexkarbon.com.au/sale/vic/north/essendon/residential/townhouse/7563545>

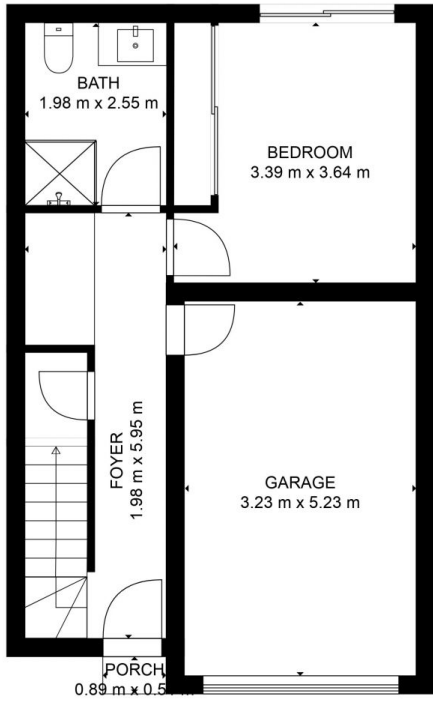
Secure video intercom entry reveals spacious accommodation of two bedrooms (BIR), one with private courtyard, accessing two full, chic bathrooms. Luxurious open plan living includes a sleek kitchen featuring stone benchtops, Blanco stainless steel appliances, deep pot and soft close drawers, ample cabinetry and huge pull-out pantry. The vast, light filled living space boasts polished timber floors plus a split system and spills onto a large entertaining balcony. Also with European laundry plus remote lockup garage with stylish storage and direct home access. A walk to Queens Park, Essendon train station and Pascoe Vale Road tram.



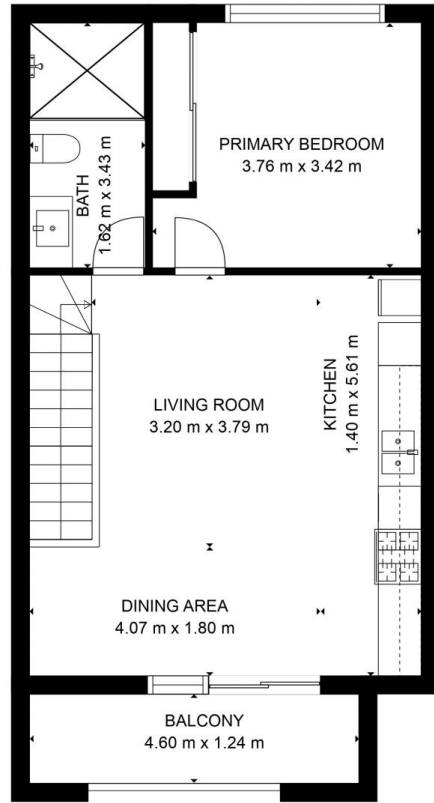
**Andy Lusi**  
 03 9376 7077



**Charles Bongiovanni**  
 03 9326 8883



FLOOR 1



FLOOR 2

MEASUREMENTS ARE CALCULATED BY CUBICASA TECHNOLOGY. DEEMED HIGHLY RELIABLE BUT NOT GUARANTEED.